

REHEAT STRETCH BLOW MOLDING MACHINE

NB-40MC

Continued pursuit of optimal functionality and cost effectiveness.
Fully automatic and highly cost efficient reheat blow molding machine.

FEATURES

● Preform Reheating

Before stretch blowing, the temperature and heat distribution in the preforms is adjusted whilst they are rotated. The number of heating rows is equal to the blow cavities, ensuring the temperature of every preform is optimal for blowing.

● Stretch Blow Molding

Stretching is performed hydraulically and the mold clamping mechanism is actuated by a toggle mechanism ideally suited for high speed, high pressure operation. If required, the blow molds can be heated or cooled with a conditioning medium by utilizing an optional mold temperature controller.

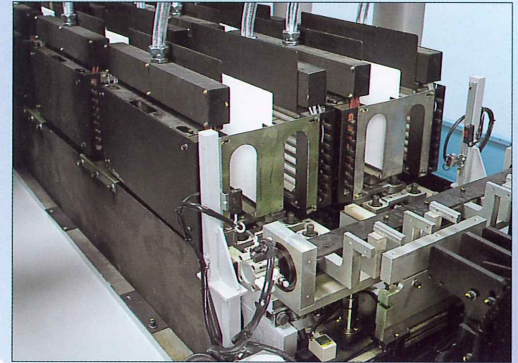
● Compactness

The main body and mechanism has been extensively redesigned to further optimize functionality and enhance container quality. As a result the NB-40MC is amongst the worlds most compact, measuring just 4,940mm long, 1,890mm wide and 2,151mm tall. With this compact machine, the production rates required in today's demanding marketplace can be achieved.

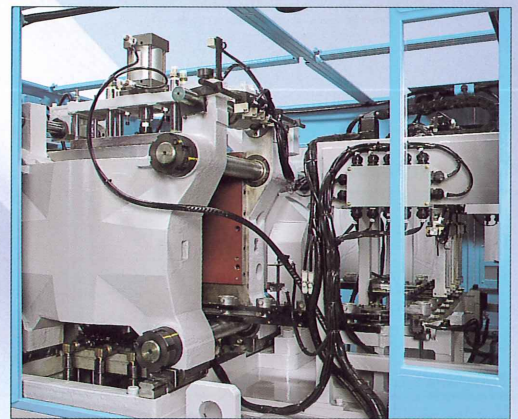
● Cost Saving

The machine quality, attention to detail and finish is exactly the same as that everybody expects from ASB's globally renowned name and standing, by utilizing the groups brand new state of art global manufacturing facilities drastic reduction of machine and mold pricing has been realized resulting with the machine being exceptionally cost efficient. Despite such low pricing the NB-40MC can produce a wide range of the highest quality PET bottles from small capacity for water to larger ones for carbonated soft drink, oil or the like.

* NB-40MC is manufactured at the group's factory in China
(Shanghai ASB Machine Co.,Ltd.)



▲ Preform Reheating Unit



▲ Stretch Blow Unit



● NB-40MC is a four cavity reheat blow molding machine, depending on the product size, production of up to 4,200 bottles per hour is possible.

* Machine shown in photo includes options.

